

September 2021 FY 2021-2022 CYDC JDSAG SUPPLEMENTAL REPORT

Prepared by the Division of Youth Services (DYS)
Data Management & Analysis
October 25



COLORADO
Division of Youth Services
Office of Children, Youth & Families

September 2021 CYDC Supplemental Report

DYS Commitment ADP & New Commitments by Judicial District

Region	JD ¹	2022 Population Estimates ²	ADP ³		New Commitments		
			September 2021	YTD	September 2021	YTD	YTD Rate ⁴
<i>Central Region</i>							
	1st	52,891	15.6	17.5	0	0	0.0
	2nd	57,545	58.8	57.5	0	7	1.2
	5th	9,044	3.0	3.1	0	0	0.0
	18th	112,610	61.3	60.0	1	11	1.0
Central Total		232,090	138.7	138.1	1	18	0.8
<i>Northeast Region</i>							
	8th	35,419	13.1	12.7	2	5	1.4
	13th	8,500	1.0	1.0	0	0	0.0
	17th	68,397	22.5	24.0	0	4	0.6
	19th	38,823	28.6	30.5	0	2	0.5
	20th	29,677	7.0	6.6	0	1	0.3
Northeast Total		180,816	72.1	74.8	2	12	0.7
<i>Southern Region</i>							
	3rd	1,848	4.0	3.6	0	1	5.4
	4th	83,104	46.1	46.9	0	4	0.5
	10th	17,372	11.6	11.3	2	3	1.7
	11th	7,277	2.4	2.1	0	0	0.0
	12th	5,367	1.0	1.4	0	0	0.0
	15th	2,139	3.0	3.0	0	0	0.0
	16th	2,747	2.0	2.0	0	0	0.0
Southern Total		119,854	70.2	70.3	2	8	0.7
<i>Western Region</i>							
	6th	7,169	3.6	3.9	0	0	0.0
	7th	10,421	3.0	2.7	0	0	0.0
	9th	8,228	1.9	2.0	0	0	0.0
	14th	5,680	0.0	0.0	0	0	0.0
	21st	16,229	11.5	12.2	1	3	1.8
	22nd	2,972	3.9	3.8	0	0	0.0
Western Total		50,699	23.8	24.5	1	3	0.6
Statewide Total		583,459	304.8	307.6	6	41	0.7

¹ JD represents the judicial district in which the client was committed. Regional totals are a sum of their respective judicial districts. Regional totals reported here may differ slightly from those reported in the Monthly Population Report, where region is defined by active caseloads.

² Source: DOLA 2022 Estimates

³ Due to rounding, totals shown may not be an exact sum of the subtotals.

⁴ Per 10,000 youth in the population

September 2021 CYDC Supplemental Report

DYS Detention ADP and New Detention Admissions by Judicial District

Region	JD	2022 Population Estimates ¹	ADP		New Admits		
			September 2021	YTD	September 2021	YTD	YTD New Admit Rate ²
<i>Central Region</i>							
	1st	52,891	11.9	11.3	14	39	7.4
	2nd	57,545	26.6	26.1	45	108	18.8
	5th	9,044	1.5	0.6	3	5	5.5
	18th	112,610	25.6	23.8	33	96	8.5
Central Total		232,090	65.6	61.9	95	248	10.7
<i>Northeast Region</i>							
	8th	35,419	9.1	7.2	7	25	7.1
	13th	8,500	0.5	1.2	3	8	9.4
	17th	68,397	9.4	10.9	21	62	9.1
	19th	38,823	8.7	9.1	11	61	15.7
	20th	29,677	4.4	3.7	2	20	6.7
Northeast Total		180,816	32.1	32.2	44	176	9.7
<i>Southern Region</i>							
	3rd	1,848	1.7	1.3	2	4	21.6
	4th	83,104	28.9	29.1	43	118	14.2
	10th	17,372	5.2	5.2	6	25	14.4
	11th	7,277	1.2	1.2	2	7	9.6
	12th	5,367	0.8	0.3	2	2	3.7
	15th	2,139	0.7	1.1	0	0	0.0
	16th	2,747	2.3	1.6	2	6	21.8
Southern Total		119,854	40.8	39.8	57	162	13.5
<i>Western Region</i>							
	6th	7,169	2.1	1.1	1	3	4.2
	7th	10,421	3.7	4.3	2	7	6.7
	9th	8,228	0.3	0.3	1	3	3.6
	14th	5,680	1.0	0.8	0	3	5.3
	21st	16,229	8.8	7.8	12	41	25.3
	22nd	2,972	1.0	1.2	2	8	26.9
Western Total		50,699	16.8	15.5	18	65	12.8
<i>Missing JD or Multiple JDs</i>			<i>0.8</i>	<i>0.7</i>			
Statewide Total		583,459	156.1	150.1	214	651	11.2

¹ Source: DOLA 2022 Estimates

² Per 10,000 youth in the population

September 2021 CYDC Supplemental Report

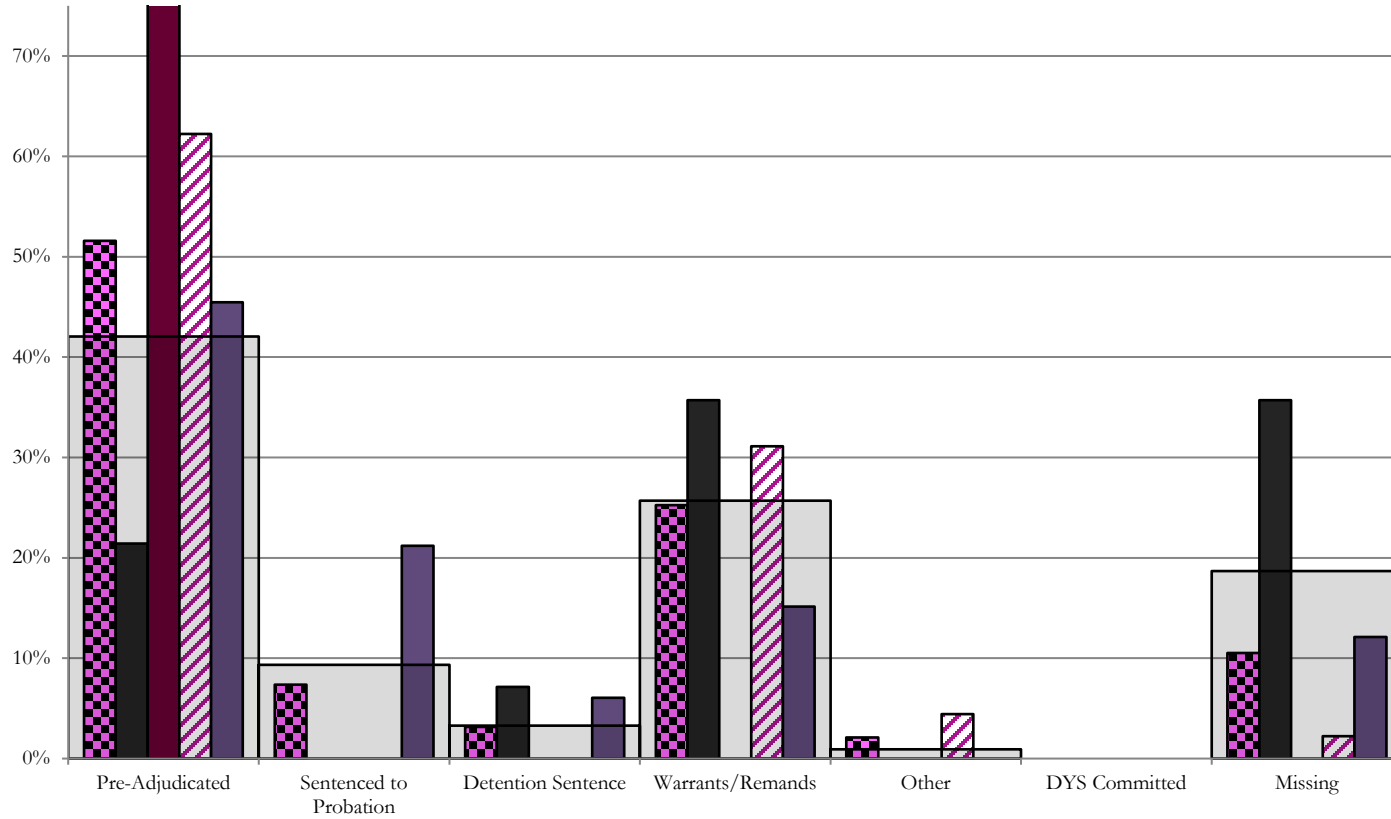
DYS Detention LOS by Judicial District				
Region	JD	YTD Detention Releases	YTD LOS (days)	LOS (days) Compared to State AVG
<i>Central Region</i>				
	1st	37	22.0	1.8
	2nd	106	16.0	-4.2
	5th	5	10.7	-9.5
	18th	86	17.4	-2.8
Central Total		234	17.3	-2.9
<i>Northeast Region</i>				
	8th	20	24.9	4.7
	13th	10	11.3	-8.9
	17th	64	11.2	-9.0
	19th	59	10.3	-9.9
	20th	19	8.6	-11.6
Northeast Total		172	12.2	-8.0
<i>Southern Region</i>				
	3rd	4	9.6	-10.6
	4th	122	21.4	1.2
	10th	25	14.8	-5.4
	11th	9	13.2	-7.0
	12th	1	16.2	-4.0
	15th	2	85.6	65.4
	16th	5	2.6	-17.5
Southern Total		168	19.8	-0.4
<i>Western Region</i>				
	6th	1	2.0	-18.2
	7th	9	23.3	3.1
	9th	2	12.6	-7.5
	14th	3	20.4	0.3
	21st	35	8.4	-11.8
	22nd	7	10.7	-9.5
Western Total		57	11.7	-8.5
Statewide Total		628	20.2	-

September 2021 CYDC JDSAG Supplemental Report

CYDC Reason Detained (RD) by Judicial District

Region	JD	Monthly New Admits	Pre-Adjudicated				Sentenced to Probation				Detention Sentence				Warrants/Remands				Other				DYS Committed		Missing											
			Felony		Misdemeanor		Technical Violator		New Charges		Probation Sentence		Detention Sentence		Valid Court Order (VCO) Truancy		Awaiting DSS (Social Services) Placement		Failure to Appear (FTA)		Failure to Comply (FTC)		Interstate Compact on Juveniles (ICJ) Hold		Immigration Hold		No Bond Hold		Out-of-Country Warrant		Institutional		Parole		Missing	
			#	%	#	%	#	%	#	%	#	%	#	%	#	%	#	%	#	%	#	%	#	%	#	%	#	%	#	%	#	%	#	%		
<i>Central Region</i>																																				
	1st	14	3	21.4%	0	0.0%	0	0.0%	0	0.0%	0	0.0%	1	7.1%	0	0.0%	0	0.0%	4	28.6%	1	7.1%	0	0.0%	0	0.0%	0	0.0%	0	0.0%	0	0.0%	0	0.0%	5	35.7%
	2nd	45	22	48.9%	6	13.3%	0	0.0%	0	0.0%	0	0.0%	0	0.0%	0	0.0%	0	0.0%	0	0.0%	14	31.1%	2	4.4%	0	0.0%	0	0.0%	0	0.0%	0	0.0%	0	0.0%	1	2.2%
	5th	3	2	66.7%	1	33.3%	0	0.0%	0	0.0%	0	0.0%	0	0.0%	0	0.0%	0	0.0%	0	0.0%	0	0.0%	0	0.0%	0	0.0%	0	0.0%	0	0.0%	0	0.0%	0	0.0%	0	0.0%
	18th	33	10	30.3%	5	15.2%	0	0.0%	7	21.2%	0	0.0%	2	6.1%	0	0.0%	0	0.0%	0	0.0%	5	15.2%	0	0.0%	0	0.0%	0	0.0%	0	0.0%	0	0.0%	0	0.0%	4	12.1%
Central Total		95	37	38.9%	12	12.6%	0	0.0%	7	7.4%	0	0.0%	3	3.2%	0	0.0%	0	0.0%	4	4.2%	20	21.1%	2	2.1%	0	0.0%	0	0.0%	0	0.0%	0	0.0%	0	0.0%	10	10.5%
<i>Northeast Region</i>																																				
	8th	7	0	0.0%	0	0.0%	0	0.0%	0	0.0%	0	0.0%	1	14.3%	0	0.0%	0	0.0%	0	0.0%	0	0.0%	0	0.0%	0	0.0%	0	0.0%	0	0.0%	0	0.0%	0	0.0%	6	85.7%
	13th	3	0	0.0%	1	33.3%	0	0.0%	0	0.0%	0	0.0%	0	0.0%	0	0.0%	0	0.0%	0	0.0%	1	33.3%	0	0.0%	0	0.0%	0	0.0%	0	0.0%	0	0.0%	0	0.0%	1	33.3%
	17th	21	1	4.8%	1	4.8%	0	0.0%	8	38.1%	0	0.0%	0	0.0%	0	0.0%	0	0.0%	0	0.0%	4	19.0%	0	0.0%	0	0.0%	0	0.0%	0	0.0%	0	0.0%	0	0.0%	7	33.3%
	19th	11	1	9.1%	2	18.2%	0	0.0%	0	0.0%	0	0.0%	0	0.0%	0	0.0%	0	0.0%	0	0.0%	7	63.6%	0	0.0%	0	0.0%	0	0.0%	0	0.0%	0	0.0%	0	0.0%	1	9.1%
	20th	2	0	0.0%	1	50.0%	0	0.0%	0	0.0%	0	0.0%	0	0.0%	0	0.0%	1	50.0%	0	0.0%	0	0.0%	0	0.0%	0	0.0%	0	0.0%	0	0.0%	0	0.0%	0	0.0%	0	0.0%
Northeast Total		44	2	4.5%	5	11.4%	0	0.0%	8	18.2%	0	0.0%	1	2.3%	0	0.0%	1	2.3%	0	0.0%	12	27.3%	0	0.0%	0	0.0%	0	0.0%	0	0.0%	0	0.0%	0	0.0%	15	34.1%
<i>Southern Region</i>																																				
	3rd	2	1	50.0%	0	0.0%	0	0.0%	0	0.0%	0	0.0%	0	0.0%	0	0.0%	0	0.0%	0	0.0%	0	0.0%	0	0.0%	0	0.0%	0	0.0%	0	0.0%	0	0.0%	0	0.0%	1	50.0%
	4th	43	19	44.2%	8	18.6%	0	0.0%	1	2.3%	0	0.0%	1	2.3%	0	0.0%	0	0.0%	5	11.6%	4	9.3%	0	0.0%	0	0.0%	0	0.0%	0	0.0%	0	0.0%	0	0.0%	5	11.6%
	10th	6	1	16.7%	0	0.0%	0	0.0%	1	16.7%	0	0.0%	0	0.0%	0	0.0%	0	0.0%	2	33.3%	2	33.3%	0	0.0%	0	0.0%	0	0.0%	0	0.0%	0	0.0%	0	0.0%	0	0.0%
	11th	2	0	0.0%	0	0.0%	0	0.0%	0	0.0%	0	0.0%	1	50.0%	0	0.0%	0	0.0%	0	0.0%	0	0.0%	0	0.0%	0	0.0%	0	0.0%	0	0.0%	0	0.0%	0	0.0%	1	50.0%
	12th	2	1	50.0%	0	0.0%	0	0.0%	0	0.0%	0	0.0%	0	0.0%	0	0.0%	0	0.0%	0	0.0%	0	0.0%	0	0.0%	0	0.0%	0	0.0%	0	0.0%	0	0.0%	0	0.0%	1	50.0%
	15th	0	0	0.0%	0	0.0%	0	0.0%	0	0.0%	0	0.0%	0	0.0%	0	0.0%	0	0.0%	0	0.0%	0	0.0%	0	0.0%	0	0.0%	0	0.0%	0	0.0%	0	0.0%	0	0.0%	0	0.0%
	16th	2	0	0.0%	0	0.0%	0	0.0%	0	0.0%	0	0.0%	0	0.0%	0	0.0%	0	0.0%	0	0.0%	0	0.0%	0	0.0%	0	0.0%	0	0.0%	0	0.0%	0	0.0%	2	100.0%		
Southern Total		57	22	38.6%	8	14.0%	0	0.0%	2	3.5%	0	0.0%	2	3.5%	0	0.0%	0	0.0%	7	12.3%	6	10.5%	0	0.0%	0	0.0%	0	0.0%	0	0.0%	0	0.0%	0	0.0%	10	17.5%
<i>Western Region</i>																																				
	6th	1	0	0.0%	0	0.0%	0	0.0%	0	0.0%	0	0.0%	0	0.0%	0	0.0%	0	0.0%	0	0.0%	0	0.0%	0	0.0%	0	0.0%	0	0.0%	0	0.0%	0	0.0%	0	0.0%	1	100.0%
	7th	2	1	50.0%	0	0.0%	0	0.0%	0	0.0%	0	0.0%	0	0.0%	0	0.0%	0	0.0%	0	0.0%	1	50.0%	0	0.0%	0	0.0%	0	0.0%	0	0.0%	0	0.0%	0	0.0%	0	0.0%
	9th	1	0	0.0%	0	0.0%	0	0.0%	0	0.0%	0	0.0%	0	0.0%	0	0.0%	0	0.0%	0	0.0%	0	0.0%	0	0.0%	0	0.0%	0	0.0%	0	0.0%	0	0.0%	0	0.0%	1	100.0%
	14th	0	0	0.0%	0	0.0%	0	0.0%	0	0.0%	0	0.0%	0	0.0%	0	0.0%	0	0.0%	0	0.0%	0	0.0%	0	0.0%	0	0.0%	0	0.0%	0	0.0%	0	0.0%	0	0.0%	0	0.0%
	21st	12	3	25.0%	0	0.0%	1	8.3%	1	8.3%	0	0.0%	0	0.0%	0	0.0%	0	0.0%	2	16.7%	3	25.0%	0	0.0%	0	0.0%	0	0.0%	0	0.0%	0	0.0%	0	0.0%	2	16.7%
	22nd	2	0	0.0%	0	0.0%	0	0.0%	1	50.0%	0	0.0%	0	0.0%	0	0.0%	0	0.0%	0	0.0%	0	0.0%	0	0.0%	0	0.0%	0	0.0%	0	0.0%	0	0.0%	0	0.0%	1	50.0%
Western Total		18	4	22.2%	0	0.0%	1	5.6%	2	11.1%	0	0.0%	0	0.0%	0	0.0%	0	0.0%	2	11.1%	4	22.2%	0	0.0%	0	0.0%	0	0.0%	0	0.0%	0	0.0%	0	0.0%	5	27.8%
Individual RD Totals		214	65	30.4%	25	11.7%	1	0.5%	19	8.9%	0	0.0%	6	2.8%	0	0.0%	1	0.5%	13	6.1%	42	19.6%	2	0.9%	0	0.0%	0	0.0%	0	0.0%	0	0.0%	0	0.0%	40	18.7%
Statewide Totals		214	90	42.1%	20	9.3%	7	3.3%	0	0.0%	0	0.0%	0	0.0%	0	0.0%	0	0.0%	55	25.7%	2	0.9%	0	0.0%	0	0.0%	0	0.0%	0	0.0%	0	0.0%	40	18.7%		

Central Region CYDC Reason Detained by Judicial District September 2021 New Admits



■ CENTRAL REGION, 95 New Admits

■ 1st JD, 14 New Admits

■ 5th JD, 3 New Admits

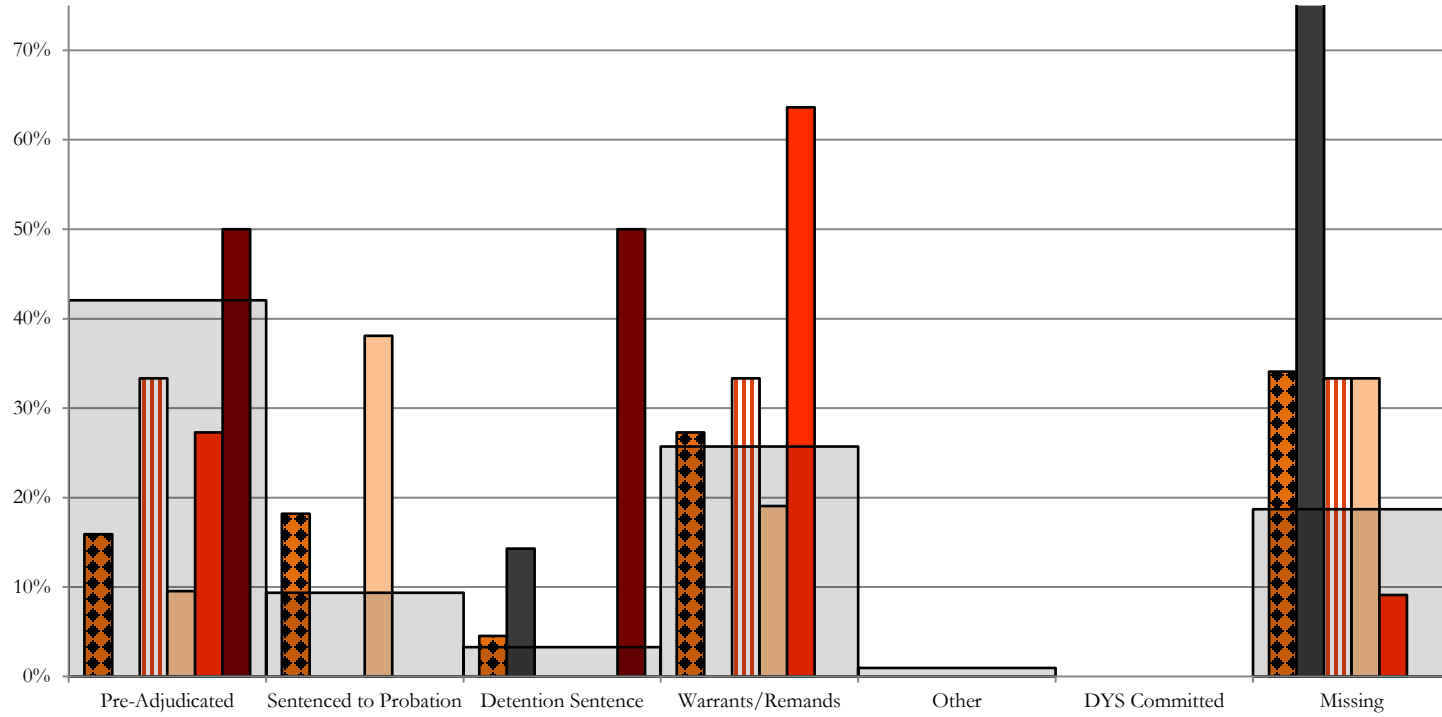
■ 2nd JD, 45 New Admits

■ 18th JD, 33 New Admits

■ STATEWIDE, 214 New Admits

Northeast Region

CYDC Reason Detained by Judicial District September 2021 New Admits



■ NORtheast REGION, 44 New Admits

■ 8th JD, 7 New Admits

■ 13th JD, 3 New Admits

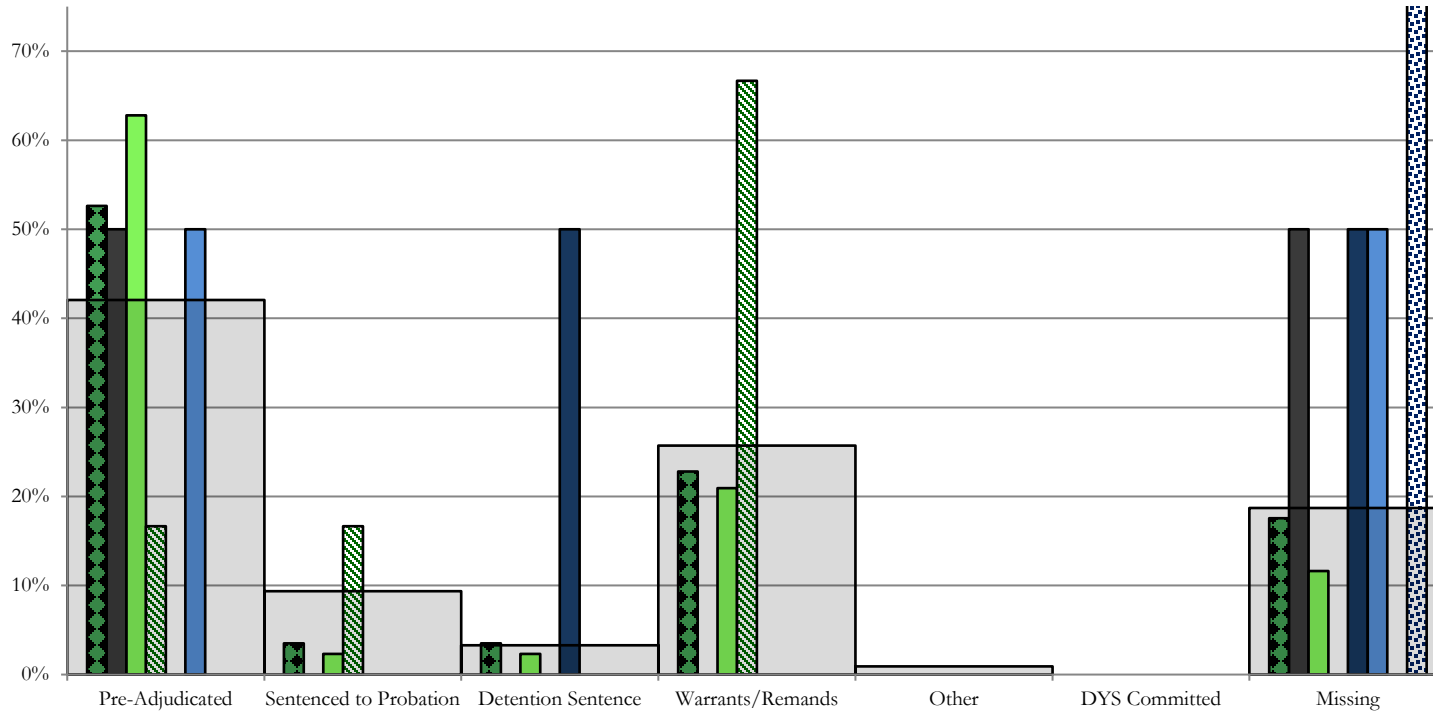
■ 17th JD, 21 New Admits

■ 19th JD, 11 New Admits

■ 20th JD, 2 New Admits

■ STATEWIDE, 214 New Admits

Southern Region CYDC Reason Detained by Judicial District September 2021 New Admits



■ SOUTHERN REGION, 57 New Admits

■ 4th JD, 43 New Admits

■ 11th JD, 2 New Admits

■ 15th JD, 0 New Admits

■ STATEWIDE, 214 New Admits

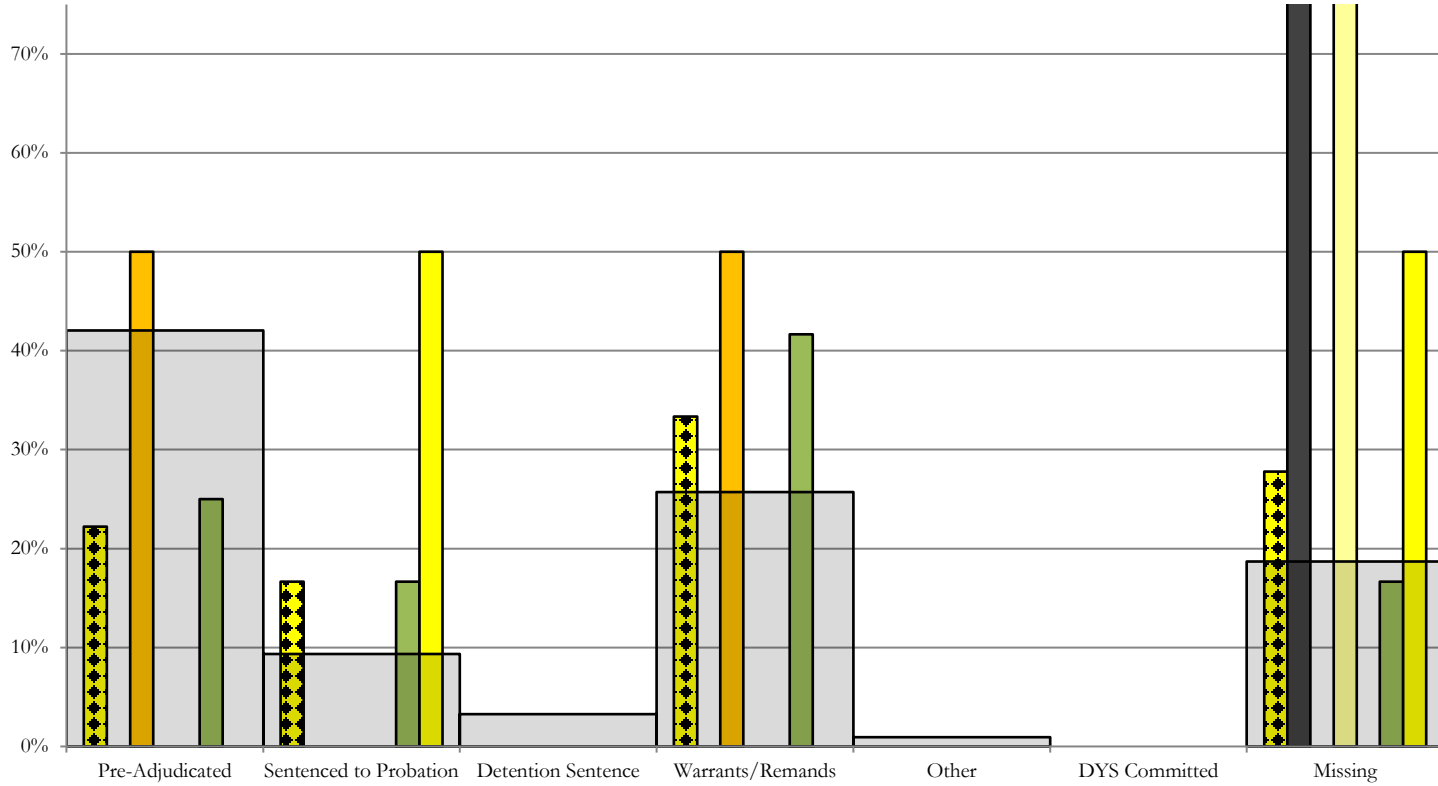
■ 3rd JD, 2 New Admits

■ 10th JD, 6 New Admits

■ 12th JD, 2 New Admits

■ 16th JD, 2 New Admits

Western Region CYDC Reason Detained by Judicial District September 2021 New Admits



■ WESTERN REGION, 18 New Admits

■ 7th JD, 2 New Admits

■ 14th JD, 0 New Admits

■ 22nd JD, 2 New Admits

■ 6th JD, 1 New Admits

■ 9th JD, 1 New Admits

■ 21st JD, 12 New Admits

■ STATEWIDE, 214 New Admits

September 2021 CYDC Supplemental Report

DYS Detention Maximum Youth Served by Judicial District ¹

Region	JD	Detention Capacity	Detention ADP		Maximum Youth Served on a Single Day ^{2,3}			
			September 2021	YTD	September 2021		YTD	
					Number of Youth	% of Detention Capacity	Number of Youth	% of Detention Capacity
<i>Central Region</i>								
	1st	20	11.9	11.3	15	75.0%	16	80.0%
	2nd	35	26.6	26.1	33	94.3%	33	94.3%
	5th	2	1.5	0.6	4	200.0%	4	200.0%
	18th	37	25.6	23.8	30	81.1%	30	81.1%
Central Region		94	65.6	61.9	74	78.7%	74	78.7%
<i>Northeast Region</i>								
	8th	11	9.1	7.2	11	100.0%	11	100.0%
	13th	2	0.5	1.2	2	100.0%	4	200.0%
	17th	17	9.4	10.9	13	76.5%	17	100.0%
	19th	15	8.7	9.1	11	73.3%	12	80.0%
	20th	10	4.4	3.7	5	50.0%	5	50.0%
Northeast Region		55	32.1	32.2	36	65.5%	38	69.1%
<i>Southern Region</i>								
	3rd	2	1.7	1.3	3	150.0%	3	150.0%
	4th	27	28.9	29.1	32	118.5%	35	129.6%
	10th	10	5.2	5.2	11	110.0%	11	110.0%
	11th	2	1.2	1.2	2	100.0%	3	150.0%
	12th	2	0.8	0.3	1	50.0%	1	50.0%
	15th	2	0.7	1.1	0	0.0%	2	100.0%
	16th	2	2.3	1.6	3	150.0%	3	150.0%
Southern Region		47	40.8	39.8	46	97.9%	46	97.9%
<i>Western Region</i>								
	6th	2	2.1	1.1	3	150.0%	3	150.0%
	7th	3	3.7	4.3	5	166.7%	6	200.0%
	9th	2	0.3	0.3	1	50.0%	2	100.0%
	14th	2	1.0	0.8	0	0.0%	2	100.0%
	21st	8	8.8	7.8	12	150.0%	12	150.0%
	22nd	2	1.0	1.2	2	100.0%	4	200.0%
Western Region		19	16.8	15.5	19	100.0%	19	100.0%
<i>Missing JD or Multiple JDs</i>			0.8	0.7				
Statewide		215	156.1	150.1	169	78.6%	169	78.6%

¹ Maximum youth served is the highest number of youth in detention on a single day during the month or fiscal year.

² Regional figures are not the sum of judicial districts, but represent the maximum count on one day for the entire region.

³ State figures are not the sum of regional figures, but represent the maximum count on one day for the entire state.

September 2021
CYDC Supplemental Report

CYDC Community ADP by Judicial District

Region	JD	Committed		Diversion		ICJ		Municipal		Pre-Adjudicated		Sentenced		VCO		Total	
		September 2021	YTD	September 2021	YTD	September 2021	YTD	September 2021	YTD	September 2021	YTD	September 2021	YTD	September 2021	YTD	September 2021	YTD
<i>Central Region</i>																	
	1st																
	2nd																
	5th																
	18th																
Central Total																	
<i>Northeast Region</i>																	
	8th																
	13th																
	17th																
	19th																
	20th																
Northeast Total																	
<i>Southern Region</i>																	
	3rd																
	4th																
	10th																
	11th																
	12th																
	15th																
	16th																
Southern Total																	
<i>Western Region</i>																	
	6th																
	7th																
	9th																
	14th																
	21st																
	22nd																
Western Total																	
Statewide Total																	

Data TBD and will be published at a later date;
Trails Mod corrections in progress.